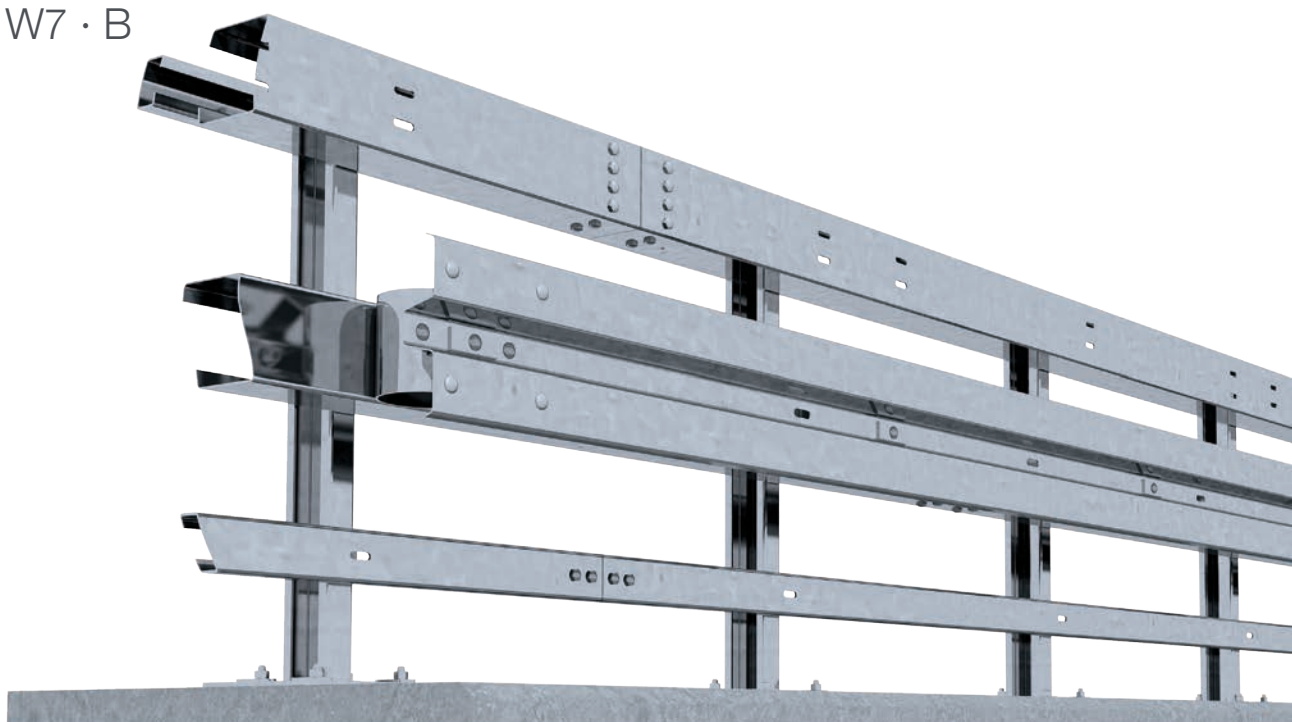
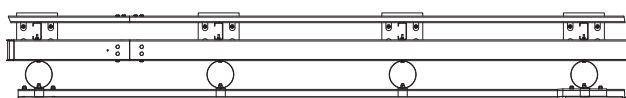
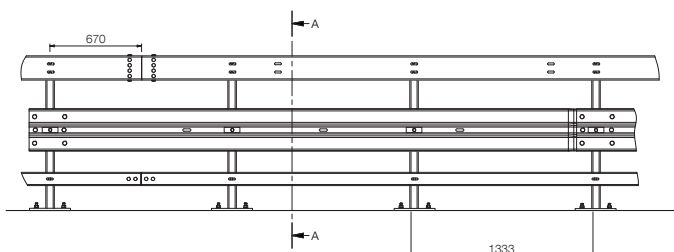
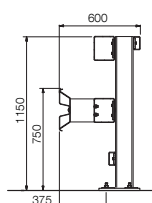


Super-Rail Plus Bw

H4b · W7 · B



CE



TEKNISKE SPECIFIKATIONER

Arbejdsbredde (m)	2.10
Arbejdsbredde (Wn)	W7
Dynamisk udبøjning (m)	1.31
Bredde (m)	0.60
Højde (m)	1.15
Stolpeafstand (m)	1.33
Forankring	Med ankerarrangement
Test længde (m)	80.0