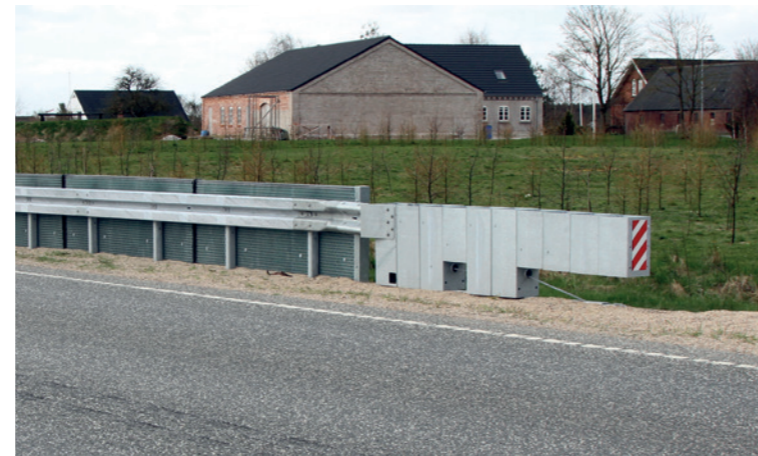
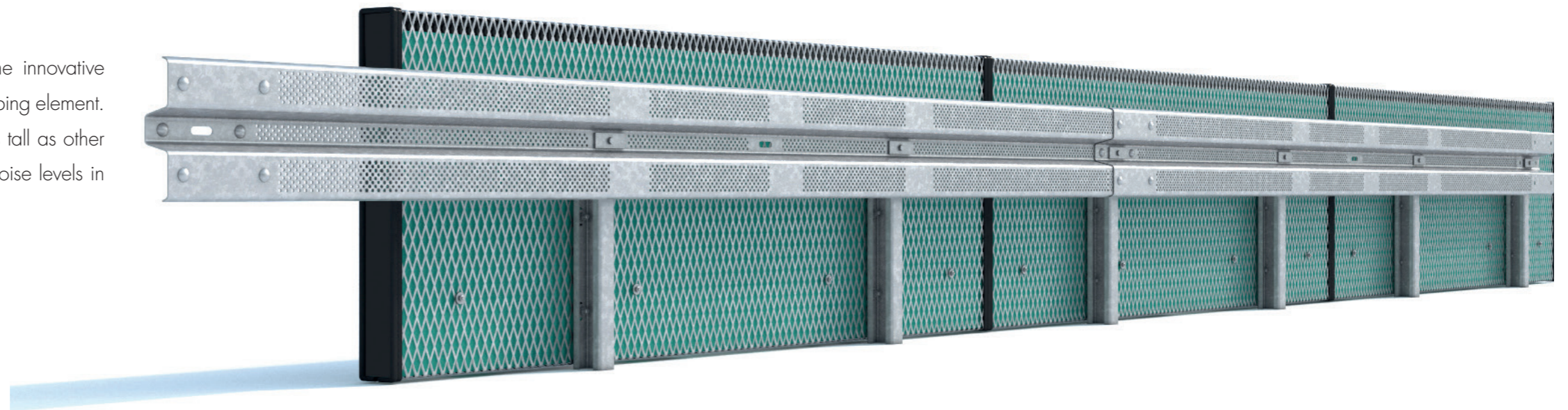




EASYRAIL
Noise Absorbing Guardrail
"ERNA"

EasyRail Noise Absorbing Guardrail: The future belongs to the silent roads

"ERNA" by VOLKMANN & ROSSBACH represents the innovative fusion of a road safety barrier with a special noise absorbing element. With an overall height of 900 mm, the system is just as tall as other common, modern guardrail systems - and yet reduces noise levels in protected areas significantly!



Performance class N2 | H1 | L1 - W4 - A

Due to the fact that 80% of all traffic noise on roads derives from the interaction of the asphalt and the wheels of the passing vehicles, there is no need for a massive noise barrier to block the noise - if the noise absorbing elements just can be brought close to the source of noise. The solution is our noise absorbing safety barrier system ERNA, which can be erected only 50 cm from the roadside.

The "ERNA" noise absorbing guardrail system is equipped with unique perforated steel beams and special panels with a stone wool filling from the market leader ROCKWOOL to absorb sound waves within its structure. Stone wool has an open-pore structure, which is ideal for the absorption and regulation of sound. Therefore, ROCKWOOL stone wool materials improve sound insulation and make an important contribution to more quietness and thus to protect your health. ERNA allows high absorption and insulation levels to shield the inhabited area alongside the road and prevents the noise from being reflected to the road users.

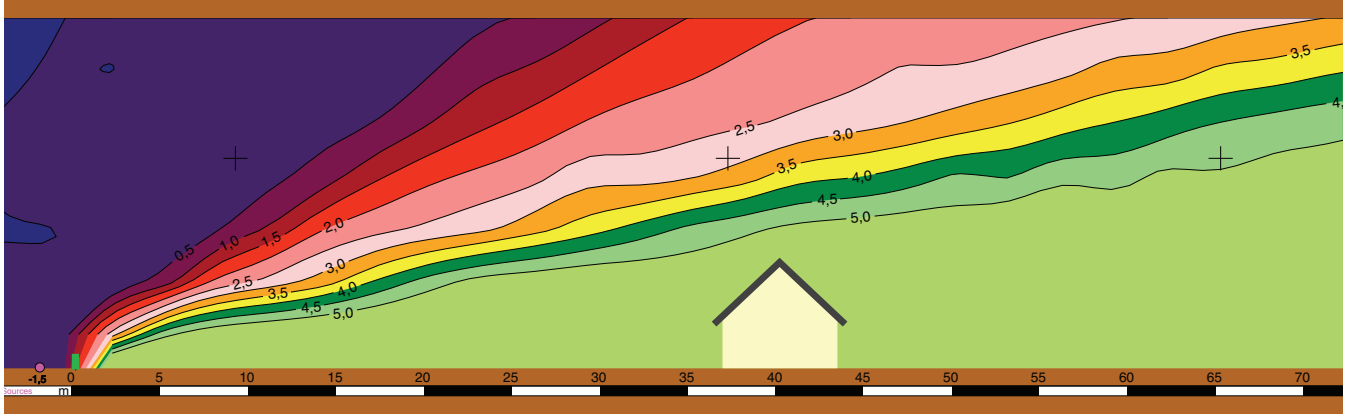
Apart from its decent noise absorbing abilities, it is also a fully functional vehicle restraint system, crash tested according to the current European Norm EN 1317. All steel parts are hot-dip galvanised for maximum life span and enduring performance.

Containment Level	Working Width	Impact Severity	Weight/m	System Height	System Width
N2 H1 L1	W4 (W _N = 1,3 m)	A	48.0 kg/m	750/900 mm	300 mm

in cooperation with

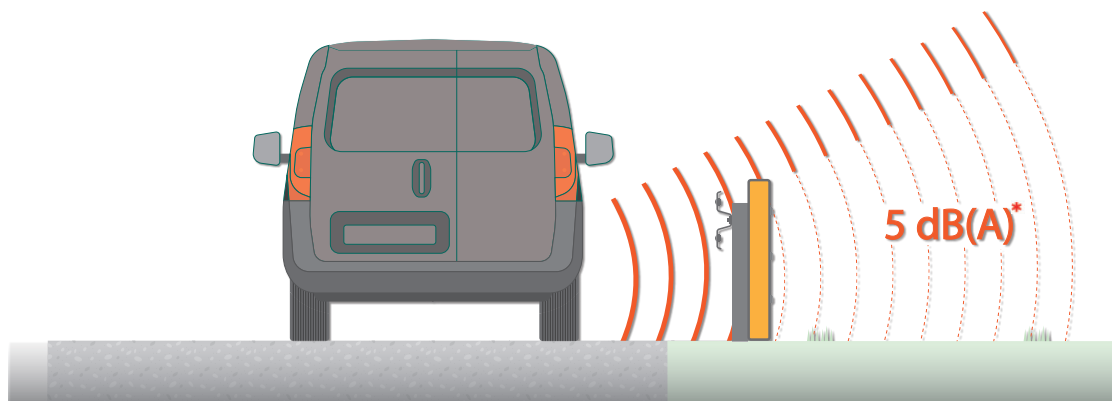
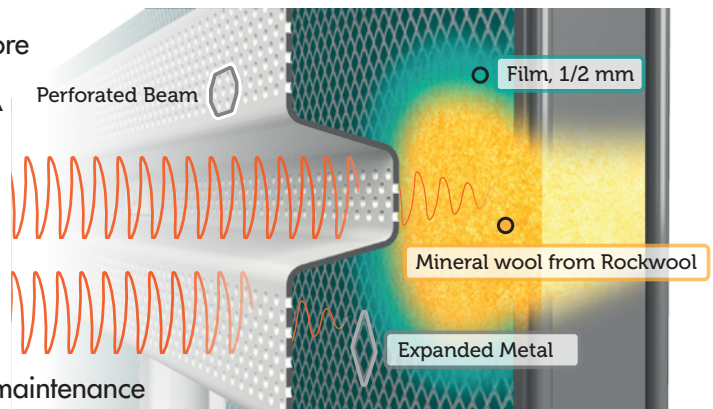


Small Size, Great Effect



The advantages of the system, especially compared with the alternative of building a noise protection wall with an additional suitable safety barrier in front of it, are compelling:

- noticeable noise reduction is up to 5 dB(A)* and more
- high level of road safety, containment level L1-W4-A
- less intervention into landscape
- free view for road users and residents
- fast installation, no special founding
- high durability
- significantly less costs in purchase, installation and maintenance



*The noise reduction value has been determined by a specialized acoustic laboratory in accordance with DIN ISO 9613-2 and the general criterias of 16. BImSchV.

VOLKMANN & ROSSBACH GmbH & Co. KG • Hohe Strasse 9-17 • 56410 Montabaur • Germany
Phone: +49 (0) 2602 135-0 • Fax: -560 • export@volkmann-rossbach.de • www.volkmann-rossbach.com